



Pricing and Amenities

Pricing plans include a monthly rental fee or two entrance fee models to suit individual needs.

Amenities create a warm, home environment for each resident, along with touches of elegance in the indoor and outdoor living areas. The entry portico opens into a spacious lobby with fireplace and comfortable sitting area. A veranda with grille, gazebo and waterfall, patio and walking path, lounges with outdoor decks, exercise room and multipurpose room are among the extras that make life pleasant.

Delicious meals created by the Chef are served in the bistro-style dining area. A Dining allowance permits individualized meal planning.

Overbrook Pointe provides the perfect setting for stylish living in a rural atmosphere combined with the safety and security of a Continuing Care Retirement Community. Major highways give easy access to nearby communities for shopping, dining, worship and social activities. On Route 228, Overbrook Pointe is just minutes from Routes 8 and 79, with access to the Pennsylvania turnpike.

To schedule a tour and learn more about Overbrook Pointe, call our sales office today at 724-687-3372.

St. John Community

Overbrook Pointe
RoseCrest Assisted Living
St. John Specialty Care Center

Lutheran SeniorLife's other services

LIFE Programs
Valley Care Adult Day Services
VNA, Western PA

For more information:


**Lutheran
SeniorLife**
St. John
Community

724-687-3372

1500 Graham Way
P.O. Box 865
Mars, PA 16046-0865

www.lutheranseniorlife.org



Lutheran SeniorLife complies with applicable Federal civil rights laws and does not discriminate on the basis of race, color, national origin, age, disability or sex. Lutheran SeniorLife does not exclude people or treat them differently because of race, color, national origin, age, disability or sex.

ATTENTION: If you do not speak or understand English, language assistance services, free of charge, are available to you. Call (724) 742-2295 (TTY Relay Services 711)

ATENCIÓN: si habla español, tiene a su disposición servicios gratuitos de asistencia lingüística. Llame al (724) 742-2295 (TTY 711)

ATTENZIONE: In caso la lingua parlata sia l'italiano, sono disponibili servizi di assistenza linguistica gratuiti. Chiamare il numero (724) 742-2295 (TTY 711)

Overbrook Pointe

Senior Living Apartments




**Lutheran
SeniorLife**
St. John
Community

www.lutheranseniorlife.org

Overbrook Pointe

For more information, call
724-687-3372

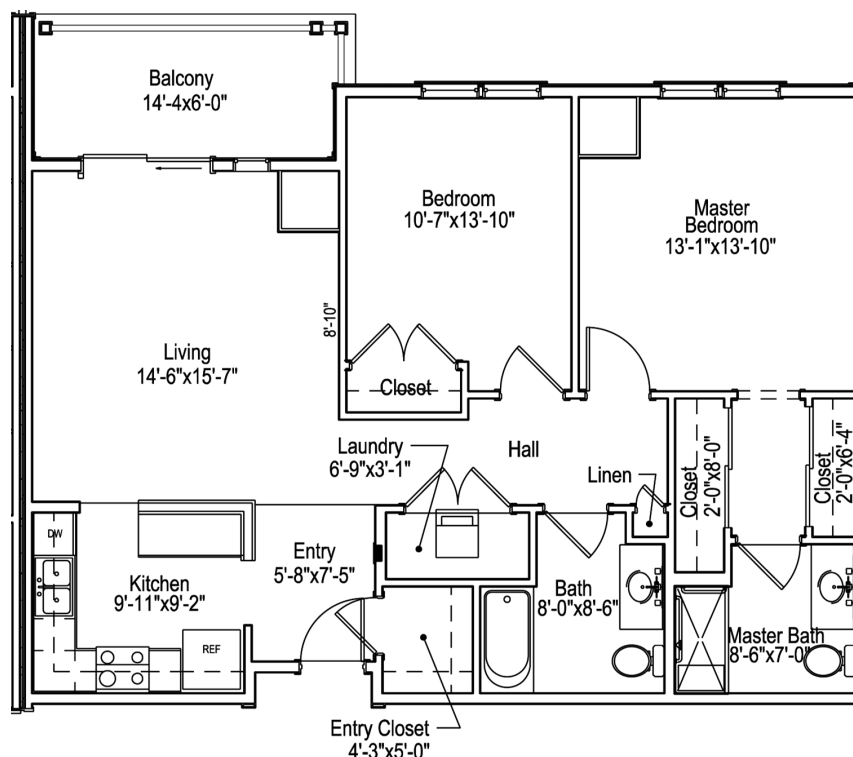
Residential Living for Seniors

Nestled in the beautiful setting of Adams Township, nears Mars, Pa., Overbrook Pointe offers maintenance-free living for those who want to maintain their lifestyle. The attractive three-story residence, with its scenic approach, includes 53 spacious apartments with hilltop views, modern conveniences and the charm of Craftsman Style architecture.

Choose from 14 apartment styles with one- and two-bedroom plans and options for a den, patio or balcony. All apartments feature fully equipped kitchens, laundry, walk-in showers and generous closet and storage space.



Choose from a variety of apartment styles



**SAMPLE
FLOOR PLAN**
Two bedroom

As a CCRC (Continuing Care Retirement Community), St. John Community offers access to assisted living, personal care, skilled nursing care and rehabilitation on campus.

Live an Abundant Life®...

